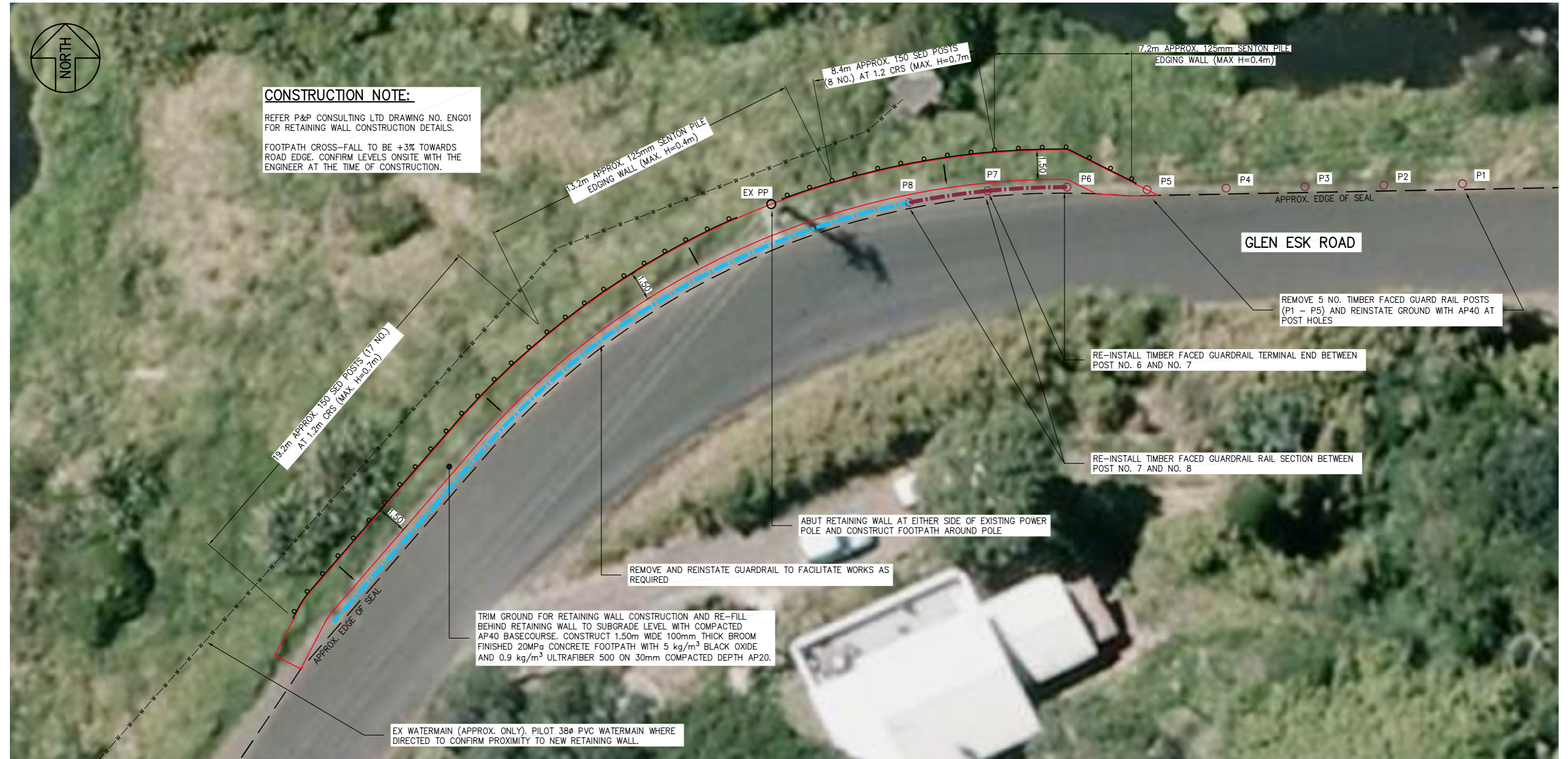




**CONSTRUCTION NOTE:**  
 REFER P&P CONSULTING LTD DRAWING NO. ENGO1 FOR RETAINING WALL CONSTRUCTION DETAILS.  
 FOOTPATH CROSS-FALL TO BE +3% TOWARDS ROAD EDGE. CONFIRM LEVELS ONSITE WITH THE ENGINEER AT THE TIME OF CONSTRUCTION.



19.2m APPROX. 150 SED POSTS (17 NO.) AT 1.2m CRS (MAX. H=0.7m)

13.2m APPROX. 125mm SENION PILE EDGING WALL (MAX. H=0.4m)

8.4m APPROX. 150 SED POSTS (8 NO.) AT 1.2 CRS (MAX. H=0.7m)

7.2m APPROX. 125mm SENION PILE EDGING WALL (MAX H=0.4m)

GLEN ESK ROAD

REMOVE 5 NO. TIMBER FACED GUARD RAIL POSTS (P1 - P5) AND REINSTATE GROUND WITH AP40 AT POST HOLES

RE-INSTALL TIMBER FACED GUARDRAIL TERMINAL END BETWEEN POST NO. 6 AND NO. 7

RE-INSTALL TIMBER FACED GUARDRAIL RAIL SECTION BETWEEN POST NO. 7 AND NO. 8

ABUT RETAINING WALL AT EITHER SIDE OF EXISTING POWER POLE AND CONSTRUCT FOOTPATH AROUND POLE

REMOVE AND REINSTATE GUARDRAIL TO FACILITATE WORKS AS REQUIRED

TRIM GROUND FOR RETAINING WALL CONSTRUCTION AND RE-FILL BEHIND RETAINING WALL TO SUBGRADE LEVEL WITH COMPACTED AP40 BASECOURSE. CONSTRUCT 1.50m WIDE 100mm THICK BROOM FINISHED 20MPa CONCRETE FOOTPATH WITH 5 kg/m<sup>3</sup> BLACK OXIDE AND 0.9 kg/m<sup>3</sup> ULTRAFIBER 500 ON 30mm COMPACTED DEPTH AP20.

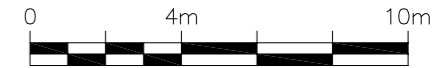
EX WATERMAIN (APPROX. ONLY). PILOT 38ø PVC WATERMAIN WHERE DIRECTED TO CONFIRM PROXIMITY TO NEW RETAINING WALL.

**LEGEND:**

- CONCRETE FOOTPATH
- TIMBER FACED GUARDRAIL - IN PLACE
- TIMBER FACED GUARDRAIL - REINSTALL
- RETAINING WALL
- EX WATERMAIN (APPROX. ONLY)

**GENERAL NOTES:**

1. ALL WORKS ARE TO COMPLY WITH WAITAKERE CITY COUNCIL'S "CODE OF PRACTICE FOR CITY INFRASTRUCTURE AND LAND DEVELOPMENT".
2. NO TOPOGRAPHICAL SURVEY HAS BEEN UNDERTAKEN. ALL FEATURES ARE TO BE VERIFIED ONSITE AT THE TIME OF CONSTRUCTION.
3. THE POSITIONS AND DEPTHS OF ANY SERVICES AND UTILITIES SHOWN ON THIS PLAN ARE INDICATIVE ONLY. THE CONTRACTOR IS RESPONSIBLE FOR OBTAINING CURRENT SERVICE/UTILITY PLANS AND PHYSICALLY VERIFYING THE EXACT POSITION OF SUCH SERVICES AND UTILITIES PRIOR TO CONSTRUCTION TO ENSURE THAT CONSTRUCTION CAN PROCEED AS DESIGNED.
4. THE CONTRACTOR IS TO EXCAVATE AND GRADE TO THE LEVELS AND EXTENTS AS DIRECTED ONSITE BY THE ENGINEER AT THE TIME OF CONSTRUCTION.



DESIGNED:	SMU	31/01/12	-	-	-	-	-	-	-
DRAWN:	SMU	31/01/12	-	-	-	-	-	-	-
DWG CHK:	-	-	-	-	-	-	-	-	-
DSGN CHK:	-	-	-	-	-	-	-	-	-
APPROVED:	SMU	31/01/12	B	REVISED FOR FOOTPATH BEHIND TFG	SMU	SMU	31/01/12	-	-
BY	DATE	REVISION			BY	APPRD	DATE		

**AUCKLAND TRANSPORT - PARKER ROAD AND PIHA FOOTPATH CONSTRUCTION  
 PIHA FOOTPATHS  
 SITE 12 - GLENESK ROAD SITE PLAN**

**BLUE BARN CONSULTING LIMITED**  
 Level 1, Central One Bldg,  
 4 Henderson Valley Road,  
 PO Box 21 525  
 Henderson  
 Auckland 0650  
 ph: +64 9 835 7009  
 fax: +64 9 835 3926

STATUS:	<b>DRAFT ONLY</b>	CONTRACT NUMBER:	<b>331-11-177-PW</b>
DRAWING NO.:	<b>1012 - 108</b>	SCALE:	<b>1:200 @ A3</b>
		REVISION:	<b>B</b>

Plotfile: Thu, 02 Feb 2012 - 5:13pm By: BLUE BARN PC 115  
 File Name: s:\Projects\1012 - Parker Road and Piha Footpath Detailed Design\CAD\06 Drawings\Photo\1012 - Piha - 108 - Site 12 - Glen Esk Rd.dwg