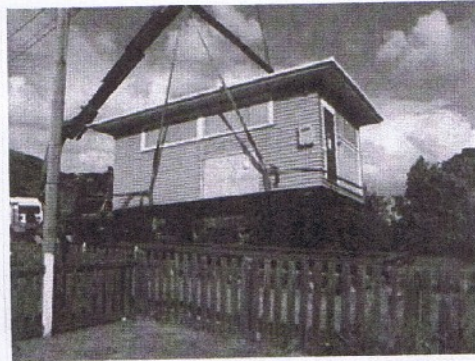
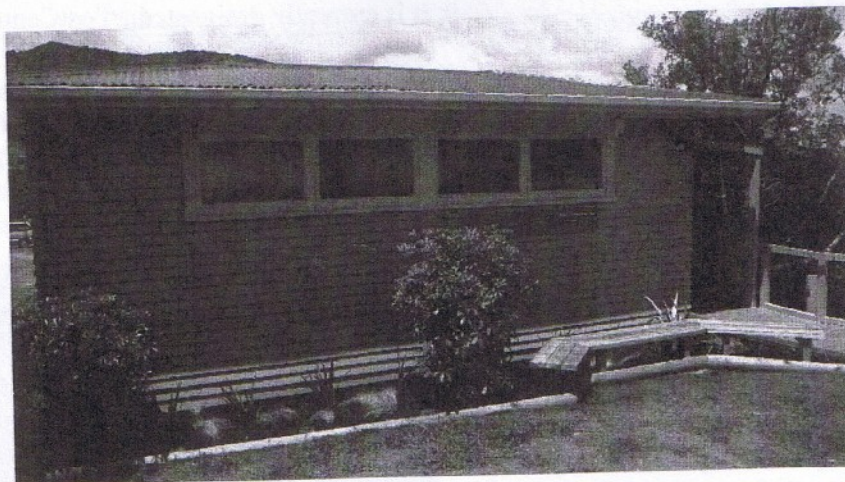


transported by truck to the Domain where the Waitakere City Council allowed it to be stored pending the acquisition of a new permanent site. Postal facilities were temporarily set up in two portable cabins installed on the Domain, one providing counter services and the other housing the private boxes.

Piha PostCentre being lifted off its foundations for relocation to the Domain in early 2009 [photo: PR&RA website].



On the move again. Transfer of the Piha PostCentre to its new permanent site in the Domain on 12 October 2009 [photo: ex Coney (2008-10)].



The Piha PostCentre following its opening in October 2009 with seat and newly planted garden [photo: ex Coney 2008-10)].

A new Domain site, leased to the PR&RA by the Waitakere City Council was selected on Seaview Road, near the eastern entrance to the camping ground and opposite the store. Groundworks began in late September 2009 and on 12 October the building was relocated to the new site. After refurbishment the new Piha PostCentre was opened on 24 October 2009.

In the early decades of the 20th century settlers often banded together and donated land, money, building materials and their labour so postal and telecommunication facilities would be quickly provided in their isolated rural communities and not lost in a fog of bureaucratic indecision. The residents of Piha, and their Association, are to be congratulated on resurrecting this pioneering spirit and also for their persistence in calling the facility a 'post office'. Perhaps there is a lesson here for NZ Post and their newfangled terms.

Postscript: date-stamps

Piha was issued with an A class, 20.5mm diameter, date-stamp, proofed on 5 February 1912. During the second period they used a J Class, 34mm diameter date-stamp, proofed on 6 September 1935 which was replaced about January 1980 with a C class, 32mm diameter date-stamp.

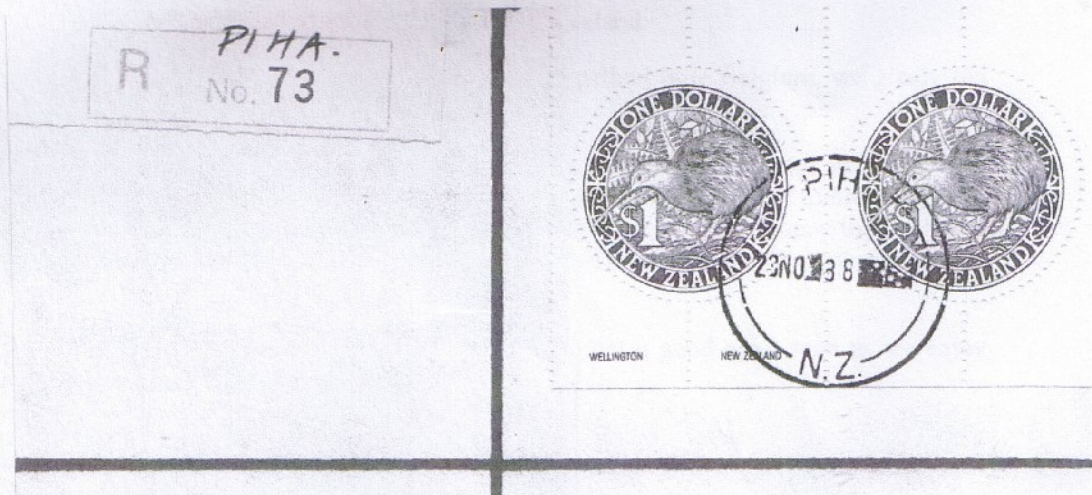
A class



J class



C class



[postmark illustrations courtesy H.E. Waite]

References

- Coney, S. 2008 (revised 2010) www.piha.co.nz history of the Piha Post Office
- Leighton's Auckland Provincial Directory
- Piha Ratepayers & Residents Association website <http://piha.or.nz>
- Startup, R.M. 1993. New Zealand post offices. 281pp. Postal History Society of NZ (Inc.)
- Wise's Auckland Provincial Directory